

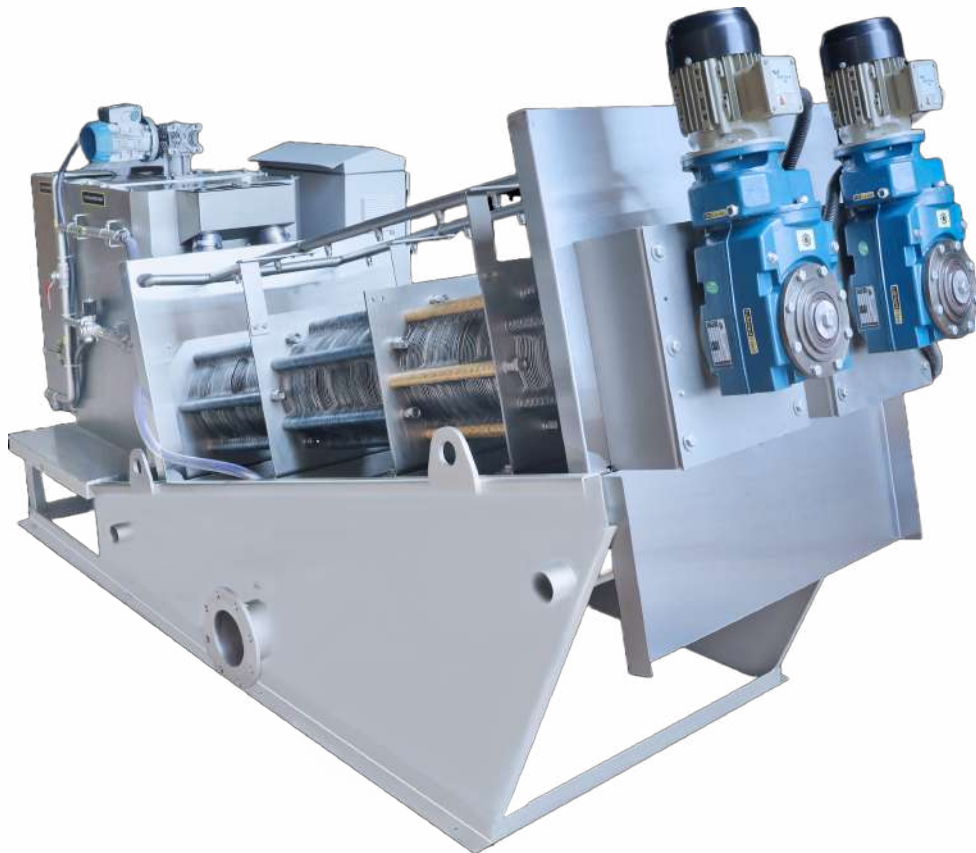


[www.akashblowers.com](http://www.akashblowers.com)



# MULTI-DISC SCREW PRESS

Innovative Solution for Solid-Liquid Separation



**SLUDGE DEWATERING MACHINE**

## ABOUT AKASH BLOWERS

With the expertise earned from 45+ years of experience, AKASH started manufacturing of Twin Lobe Rotary Air Blowers wayback in 2009. Since then the company has consistently strengthened its manufacturing base producing a wide range of products line includes TWIN LOBE & TRI LOBE ROTARY Air Blowers/Compressors (Root Blowers), Mechanical Vacuum Boosters & Acoustic Hoods. We have also started dealing and manufacturing in Ring Blowers/Regenerative/Side Channel Blowers and Multi-Disc Screw Press. These wide-range products and the technical expertise gained over the year have enabled AKASH to serve various segments of industry such as Flue Gas Application in sponge Iron, Silo Aeration for Cement Plants, Bulker unloading, Pneumatic conveying Sulphonation in Sugar plants, Water treatments plants, Effluent treatment plants, Aqua culture farms, Chemical & pharmaceutical plants, Food processing units.



### VISION

To Become the No. 1 company in the Industry which delivers quality products for its Customers, believes in Innovation to meet the changing needs of the Customers and Market and are able to keep their Employees and stakeholders Happy and Satisfied, thus ensuring their growth along with the Company.

### MISSION

To Serve our Customers as their most trusted and reliable partner in the Industry.

## VALUES



Passion to Win & Be-The-Best at whatever we do.



Dedication for unparalleled quality and proven success.



Innovation anticipating our client's needs.



Integrity knowing what is right and acting responsibly with our clients, colleagues and community.



Guidance serving our client with experienced guidance regarding their actual needs.

# WHY US?

Clients choose AKASH when they want to work in partnership  
– our goodwill is based on the trust of our clients earned by  
our passion to deliver the best.

1

**Laser Cutting Machine is used  
for cutting fixed and moving rings**

2

**Machining is done on CNC/VMC  
as a result of superior accuracy**

3

**PLC based automation is  
available**

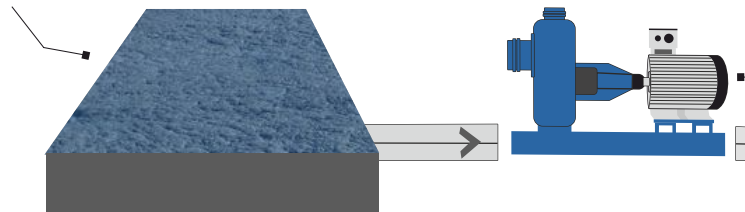
4

**Telephonic & online support  
available**

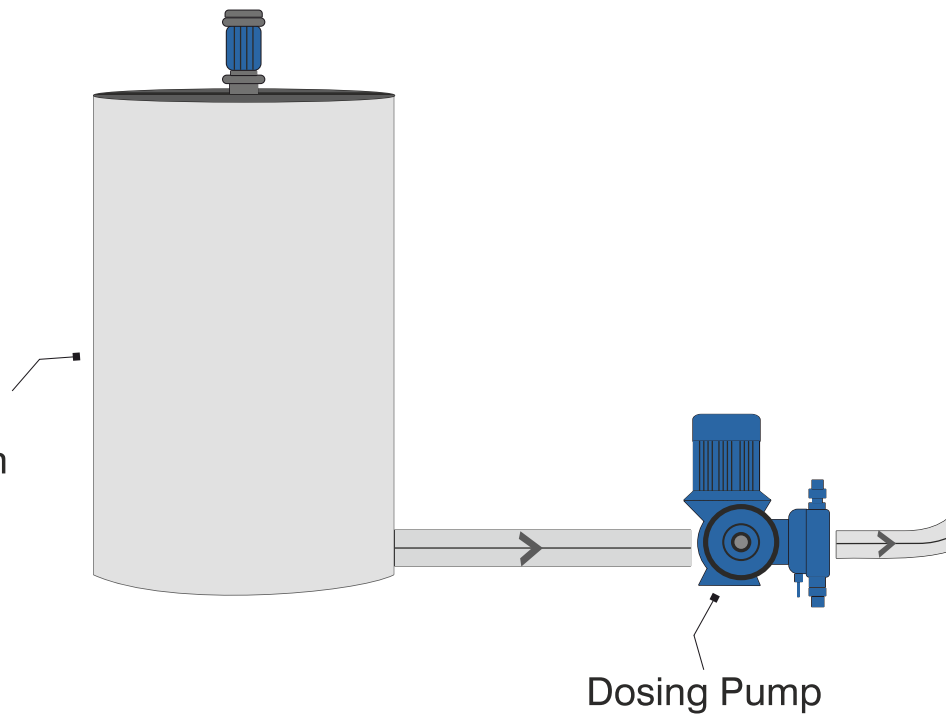




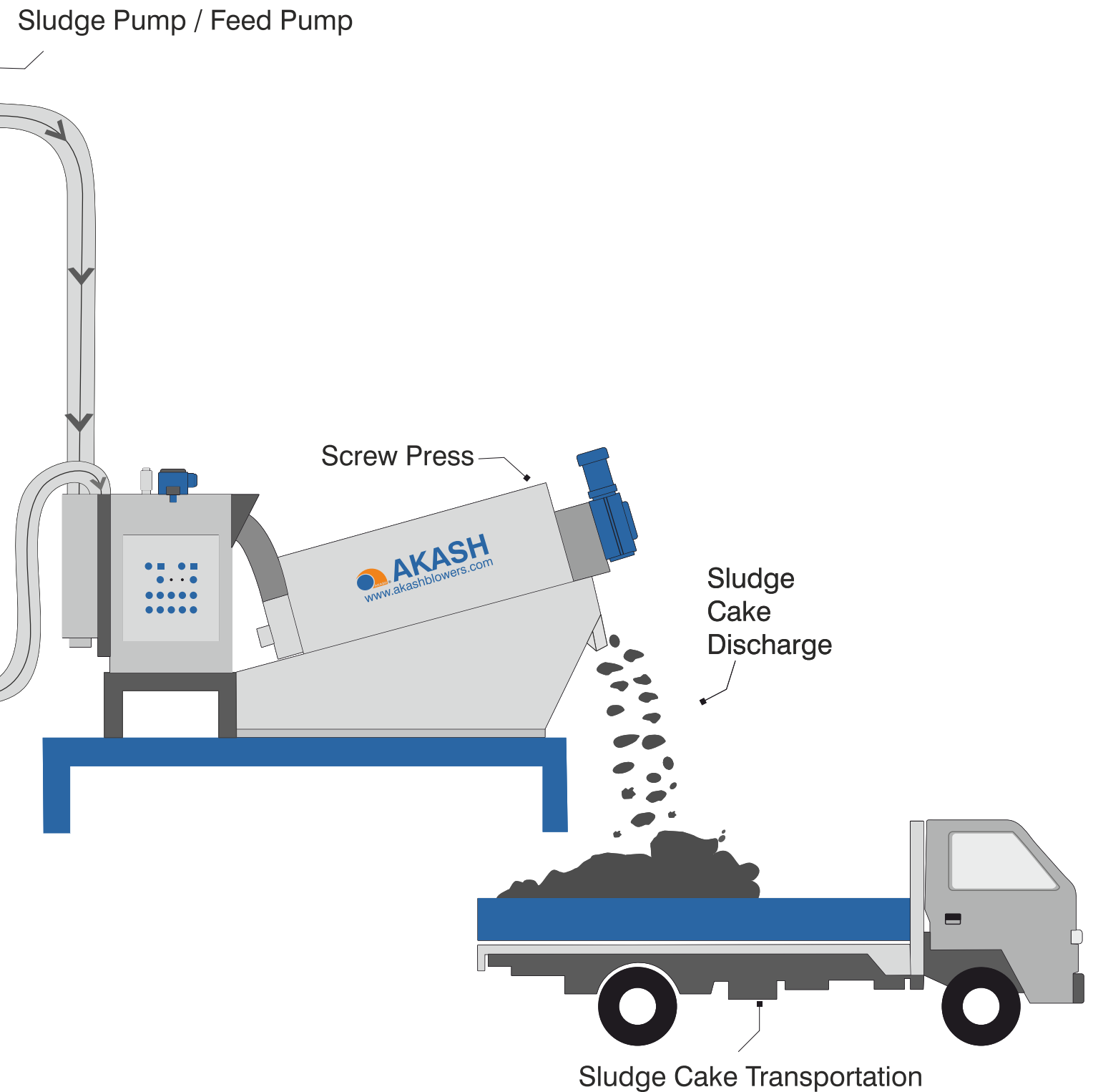
Sludge / Holding Tank



Polymer Preparation Tank



# Flow Diagram Of A Typical Sludge Dewatering Process





### Powerful Geared Motor

Powerful geared motor drive the screw shaft and controlled speed thru VFD



### Spray Nozzle

Automated cleaning thru control panel for the rings.



### Adjustable Pressure Plate

To optimise the moisture content of sludge

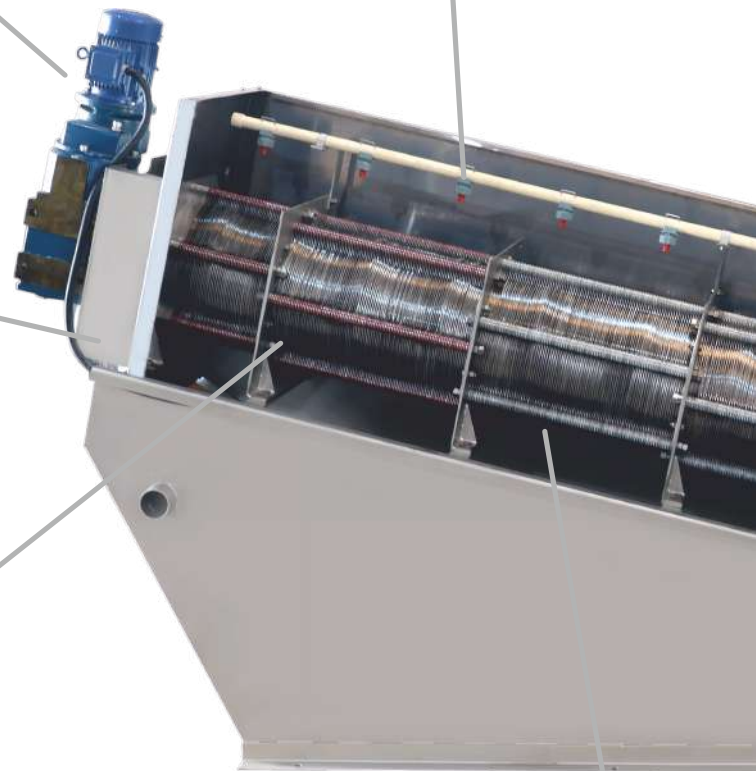


### Fixed & Moving Rings

Series of moving rings for clog free filtration of water.



### Spiral Screw



## Key Parts & Features



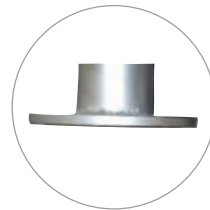
### **Agitator With Geared Motor**

Agitator with geared motor controlled speed thru VFD for effective flocculation



### **Overflow Return Pipe**

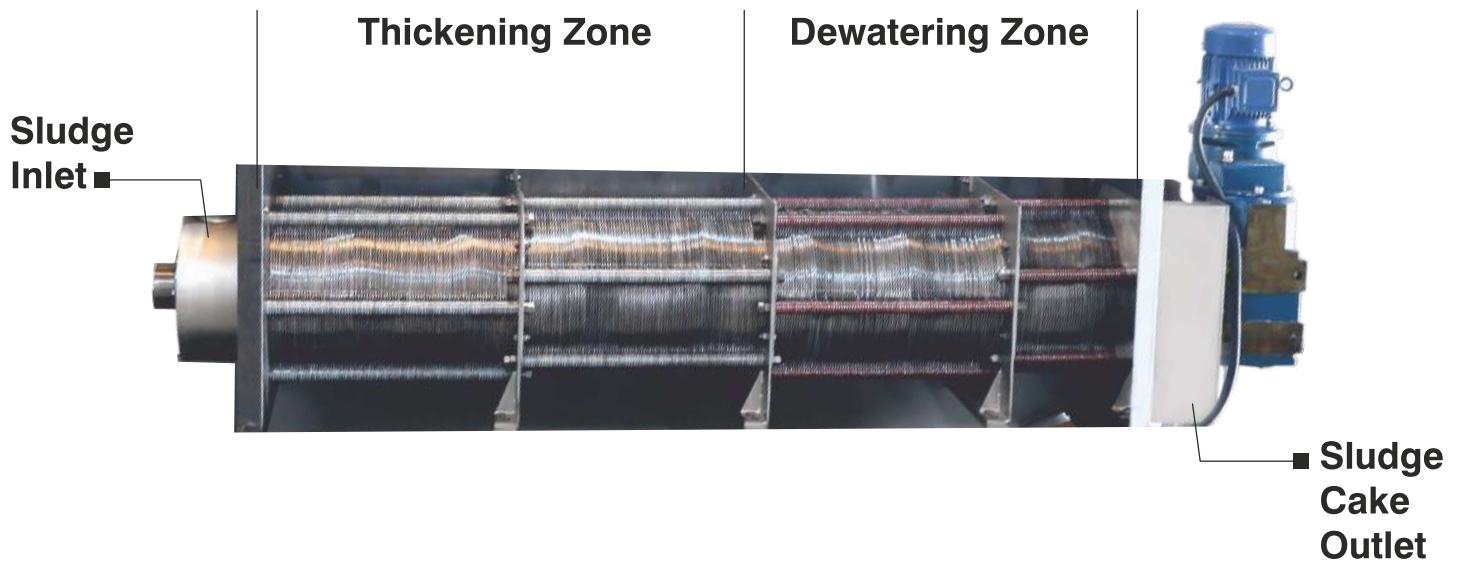
Overflow return pipe with adjustable height to control flow rate



### **Sludge feed line**



### **Flocculation Tank Drain**



## MULTI-DISC SCREW PRESS

The Multi-Disc Screw Press are widely used in solid-liquid separation to minimize the sludge disposal. The Sludge is pumped to the Flocculation tank chamber where poly-electrolyte solution is added for formation of flocks and continuously mixed during the operation with the help of Flocculation paddle to ensure the relative stability of the sludge concentration. Then treated sludge is moves forward into the dewatering cylinder where liquid is drain from the gap between the rings under the gravity and dewater sludge cake discharge at the end of cylinder.

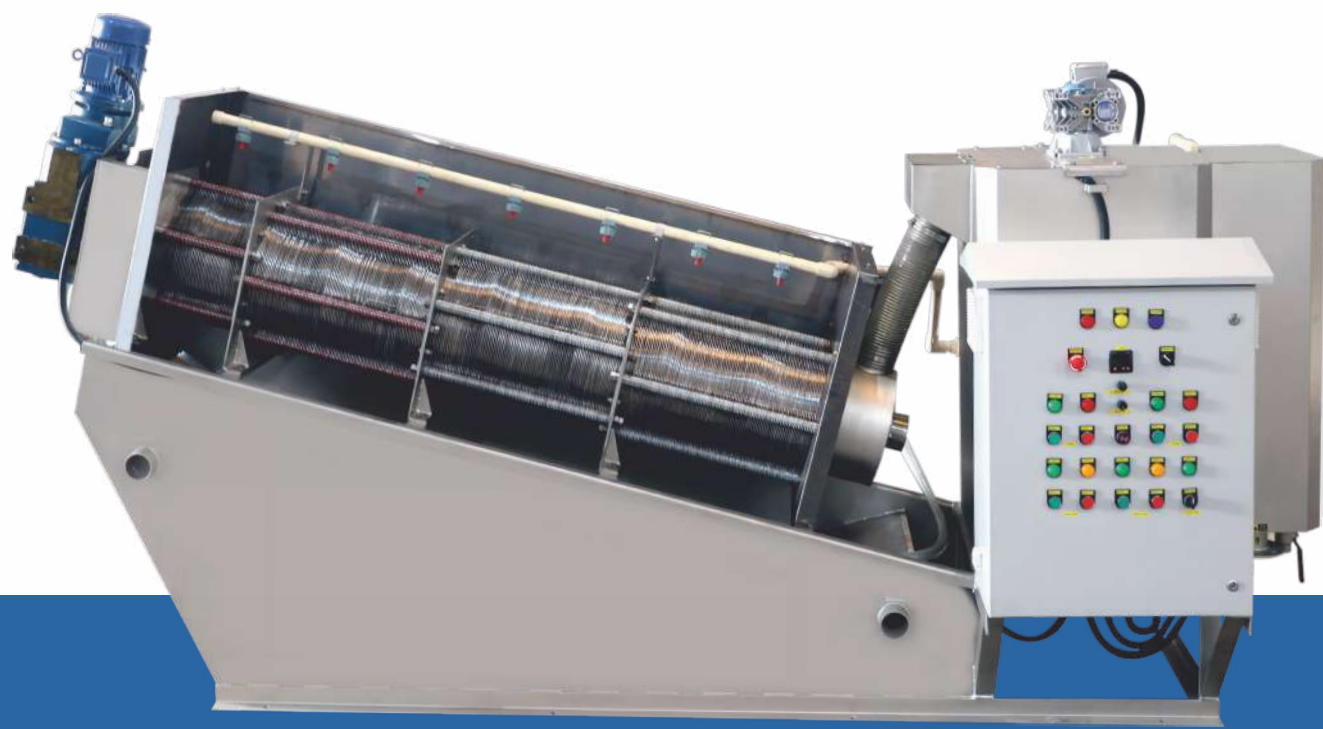
### ADVANTAGES

- Low power consumption
- Low noise and vibration
- Fully automatic and continuous operation
- Minimal operator requirement
- Easy to operate and maintenance



# MODEL SELECTION

MODEL	INLET FLOW RATE (M <sup>3</sup> /HR) @ 1% SLUDGE CONCENTRATE	DRY SLUDGE (KG/HR)	ELECTRICAL POWER (KW)	DIMENSION (MM)			RINSING WATER CONSUMPTION (L/H)	WEIGHT (KG)
				L	W	H		
ASDM - 1080	0.5	1-5	0.30	1790	830	1085	18	175
ASDM - 2080	1.0	6-10	0.54	1985	1095	1140	24	225
ASDM - 1115	1.5	11-15	0.36	2125	870	1115	30	245
ASDM - 2115	3.0	16-30	0.54	2125	1000	1115	60	320
ASDM - 1210	6.0	31-60	0.55	3205	1065	1565	42	520
ASDM - 2210	12.0	61-120	0.92	3205	1255	1565	84	700
ASDM - 1250	8.0	61-80	0.93	3430	1160	1785	42	650
ASDM - 1350	20.0	121-200	1.47	4370	1130	2310	60	1220
ASDM - 2350	40.0	201-400	2.57	4520	1495	2310	120	2215
ASDM - 3350	60.0	401-600	3.67	4750	2045	2310	180	4000



**SPARE PARTS ARE READILY AVAILABLE**



## APPLICATIONS

- Municipal Sewage Sludge
- Waste Water Treatment Plant
- Chemical & Pharmaceutical Plants
- Food & Beverages
- Industrial Waste Water Treatment Plant
- Leather Industry
- Textile Industry

## OUR ESTEEMED CLIENTELE

adani



PARLE



Whirlpool

verka



NEROLAC  
HEALTHY HOME PAINTS



airtel



LIBERTY

MSME

SOMANY



Fortis  
HOSPITALS

JK LAKSHMI



RELAXO



MITSUBISHI  
ELECTRIC  
Changes for the Better



## CHANNEL PARTNERS AND SERVICE CENTERS



### COMPANY OWNED SERVICE CENTERS

- Delhi
- Chandigarh
- Ahmedabad
- Pune
- Banagalore

■ Head Office

📍 Dealer Cum Service Center

📍 Service Center owned by Company



[www.akashblowers.com](http://www.akashblowers.com)

### AKASH Blowers Private Limited

Plot No. 1710, Modern Industrial Estate,  
Part-B, Bahadurgarh Distt-Jhajjar,  
Haryana 124507, India

Contact No.: 702 702 9009

Email: [info@akashblowers.com](mailto:info@akashblowers.com)

Web.: [www.akashblowers.com](http://www.akashblowers.com)

